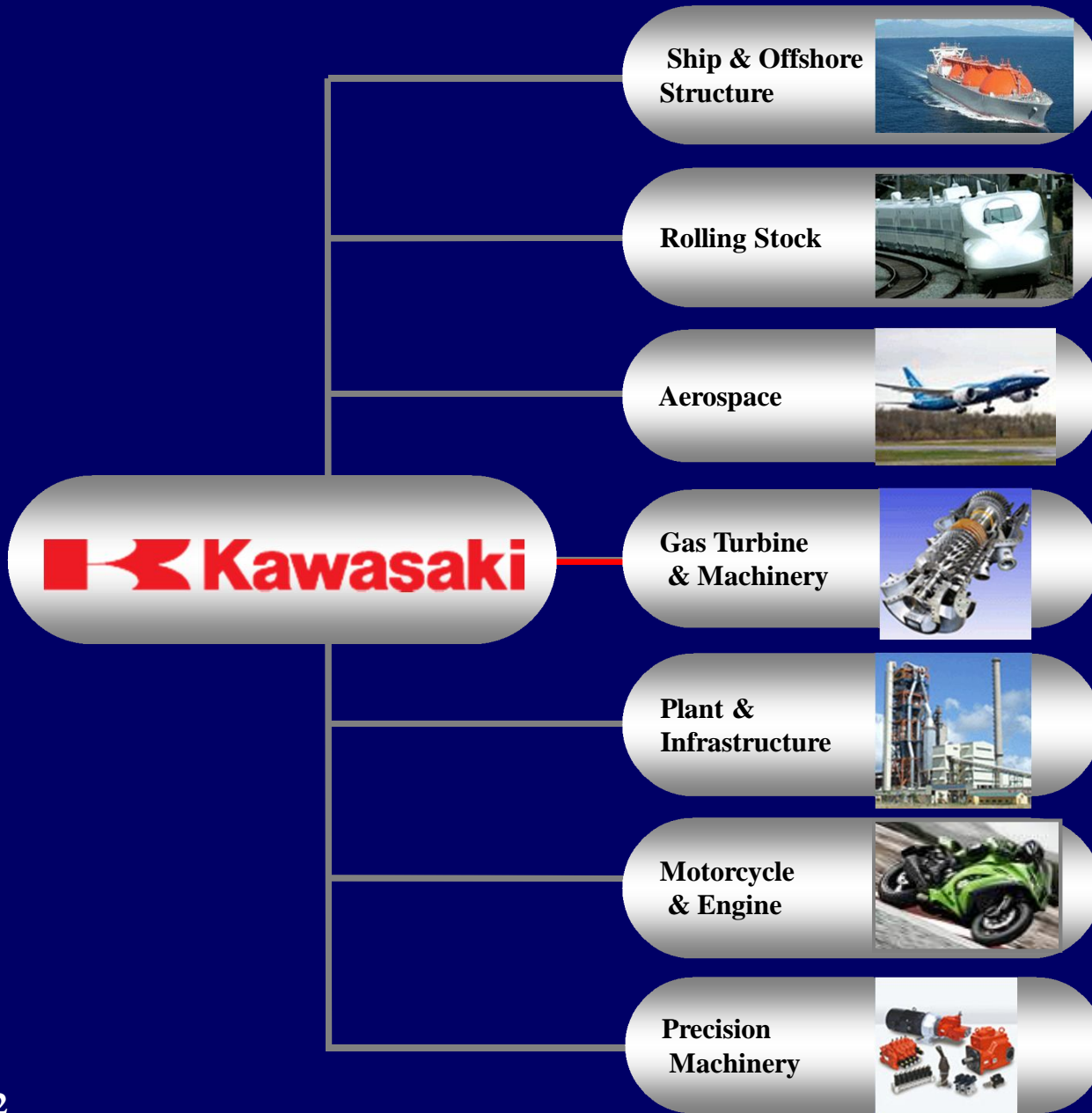

*Products of
Kawasaki Thermal Engineering
And
Kawasaki Group*



Kawasaki Thermal Engineering Co., Ltd.

Introduction of Kawasaki



Absorption Chillers

Kawasaki Thermal Engineering Co., Ltd. (KTE)

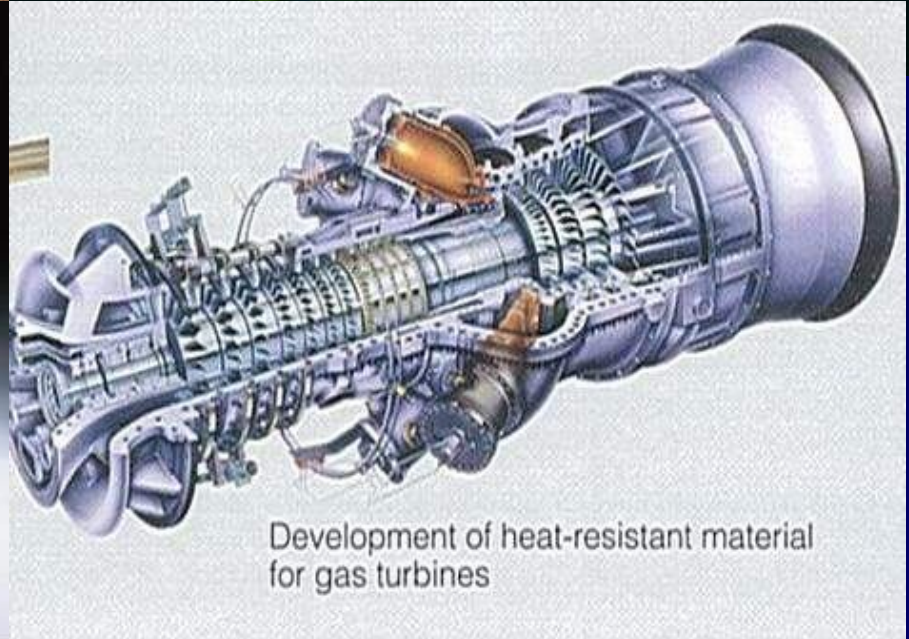


Industrial Boilers

Kawasaki, working as one for the good of the planet

- _ We are the Kawasaki Group, a global technology leader with diverse integrated strengths.**
- _ We create new value-for a better environment and a brighter future for generations to come.**

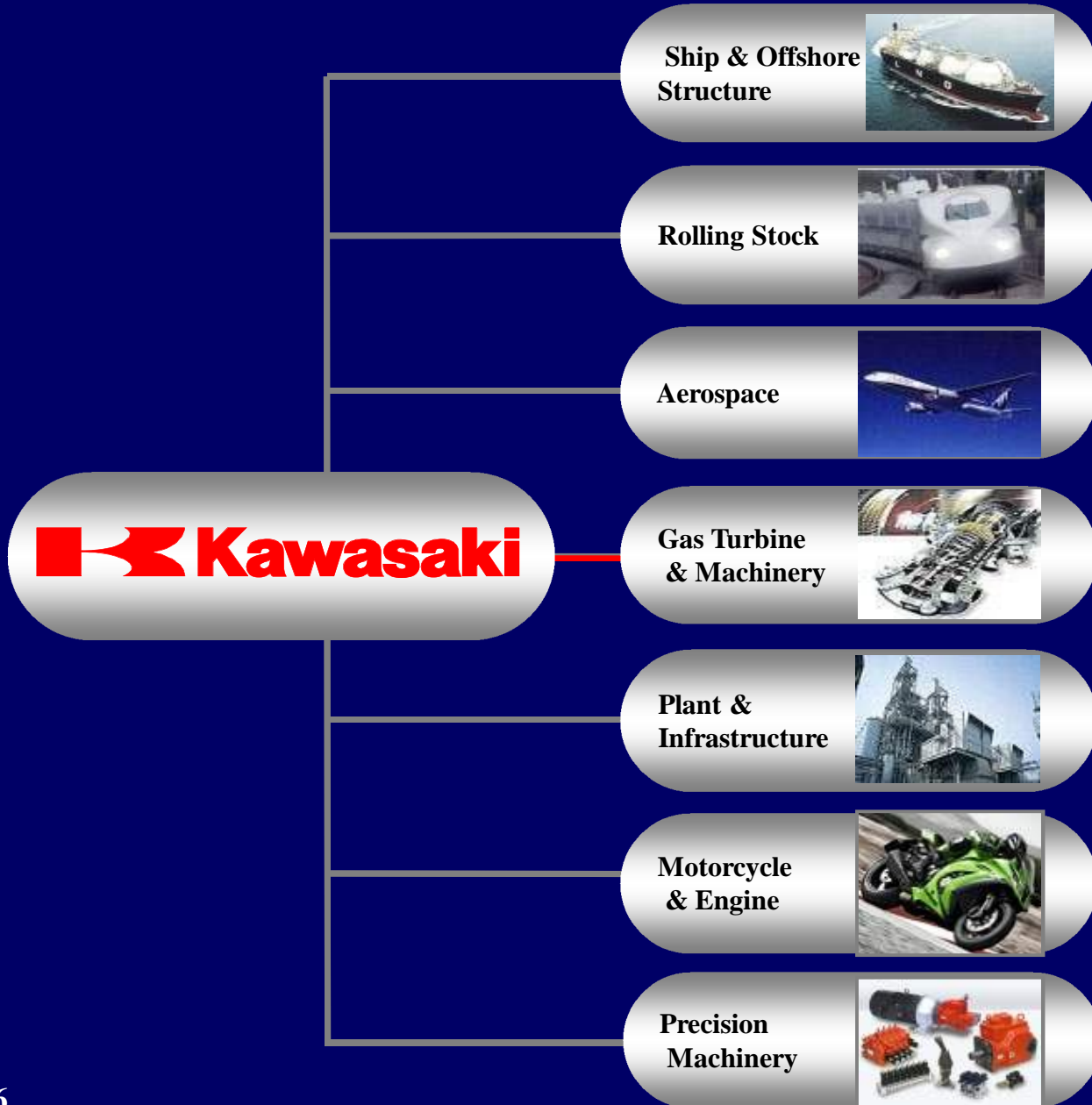
Typical Products of Kawasaki



Products of Kawasaki



Introduction of Kawasaki



Absorption Chillers

Kawasaki Thermal Engineering Co., Ltd. (KTE)

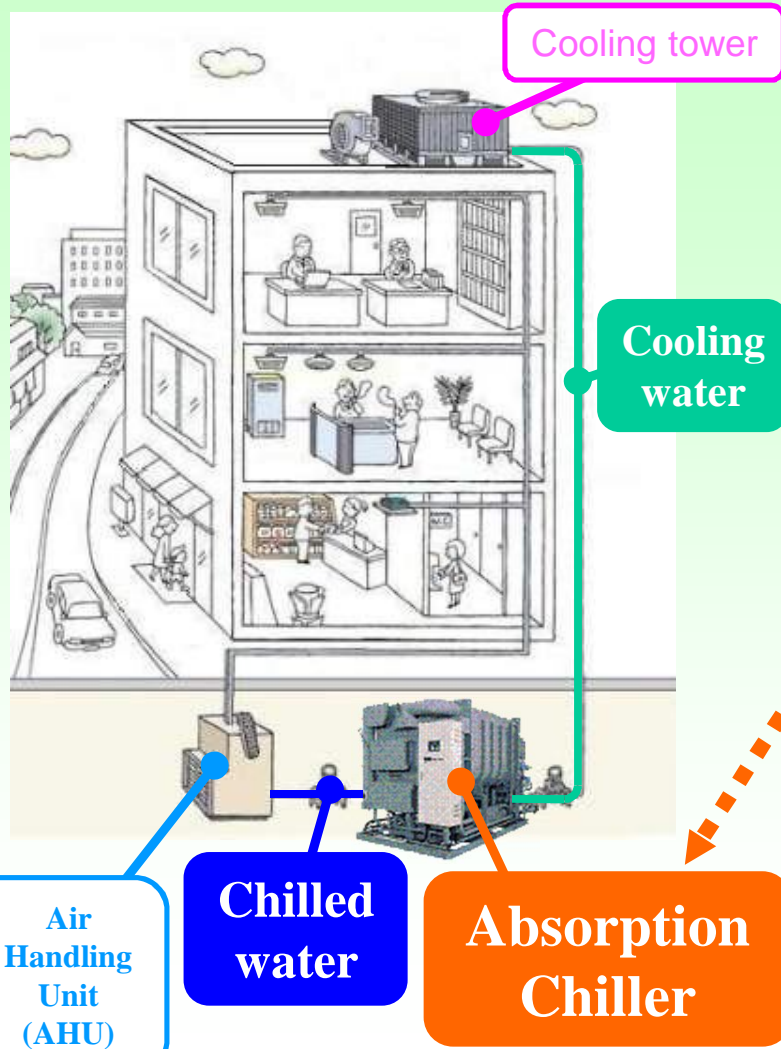


Industrial Boilers

What's an Absorption Chiller



What's an Absorption Chiller ?



★ Special Feature



- ① Freon-Free
(Refrigerant = H₂O)
- ② Less power consumption
- ③ Various Energy Sources

History of Kawasaki Chiller

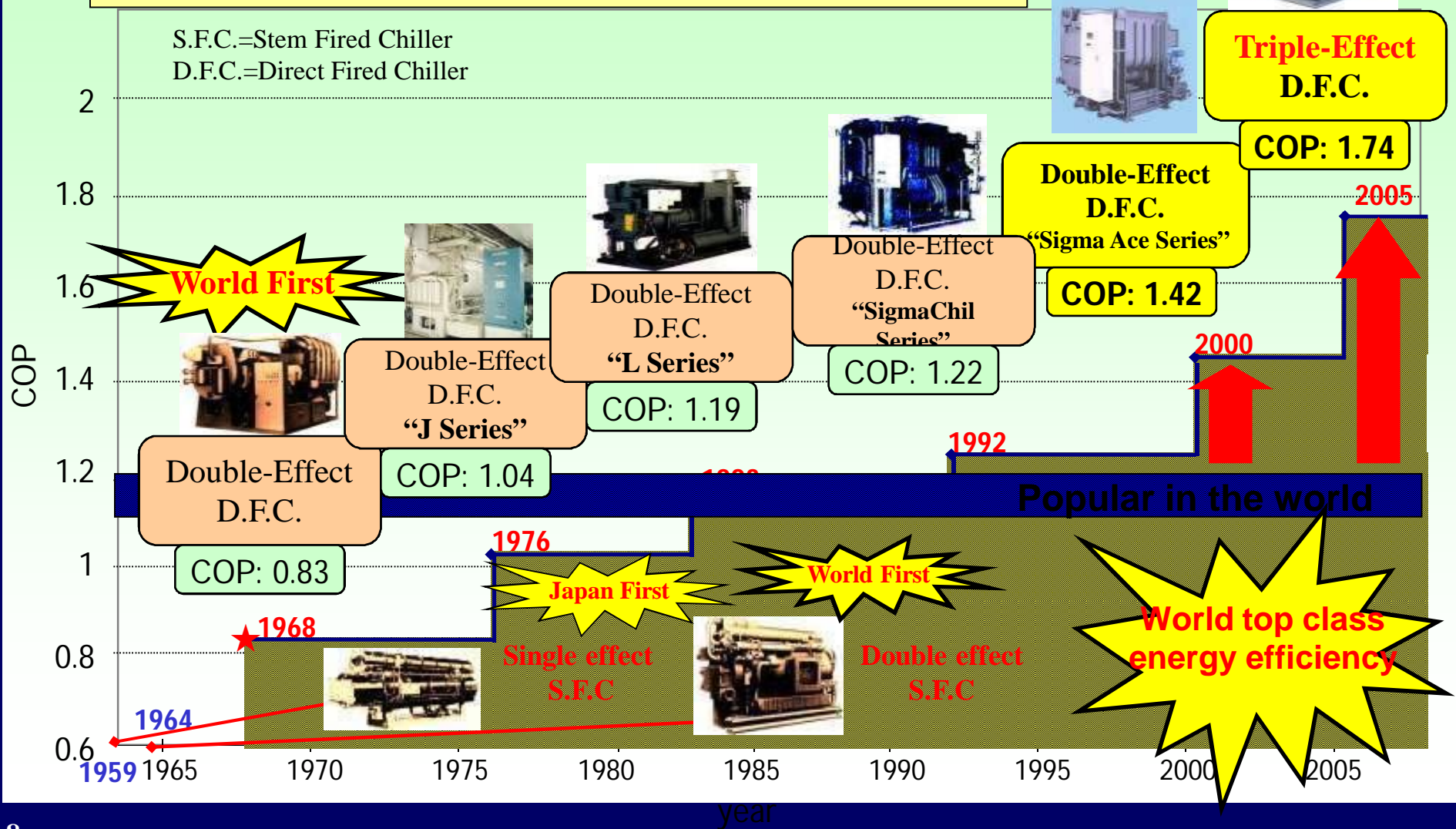


Continuous Efforts for Higher COP

World First

$$\text{COP(Coefficient of Performance)} = \text{Cooling Capacity} / \text{LHV Heat Input}$$

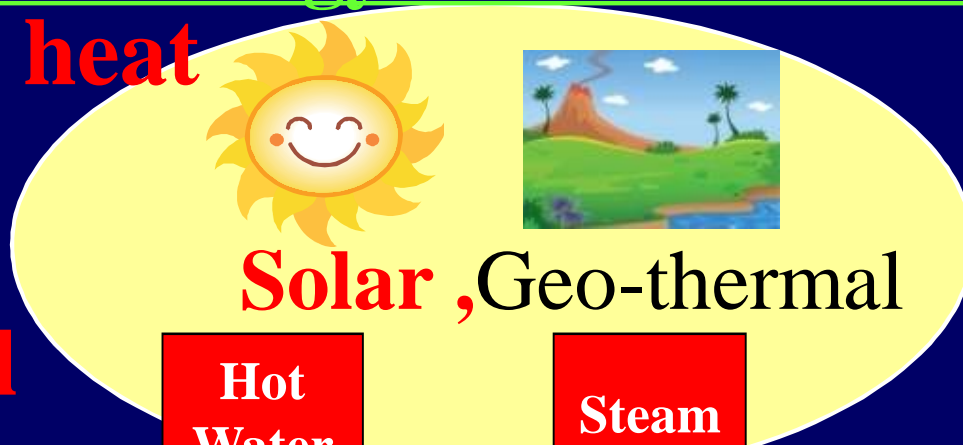
S.F.C.=Stem Fired Chiller
D.F.C.=Direct Fired Chiller



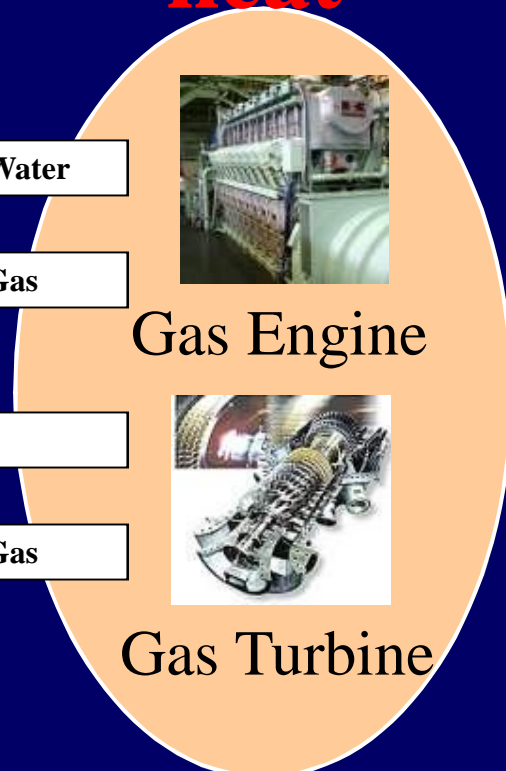
Energy Sources of Absorption Chiller

Various Energy Sources can be utilized

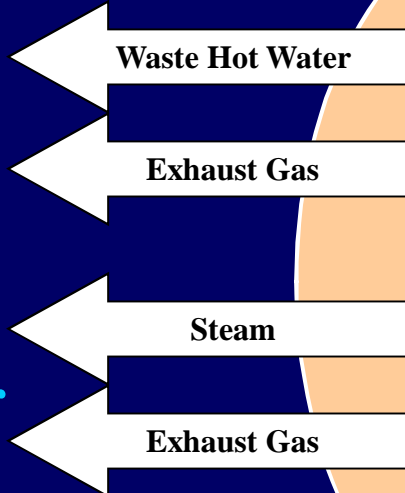
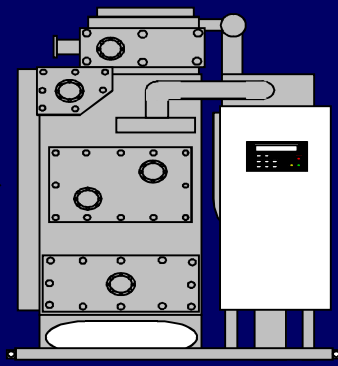
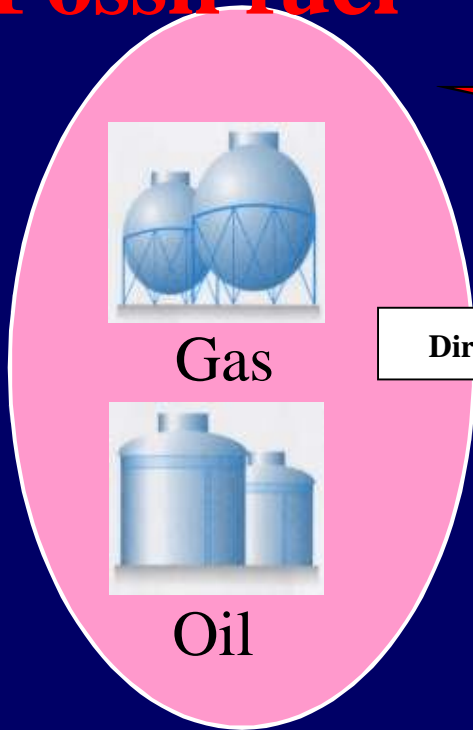
Natural heat



Exhaust heat



Fossil fuel



Chilled Water

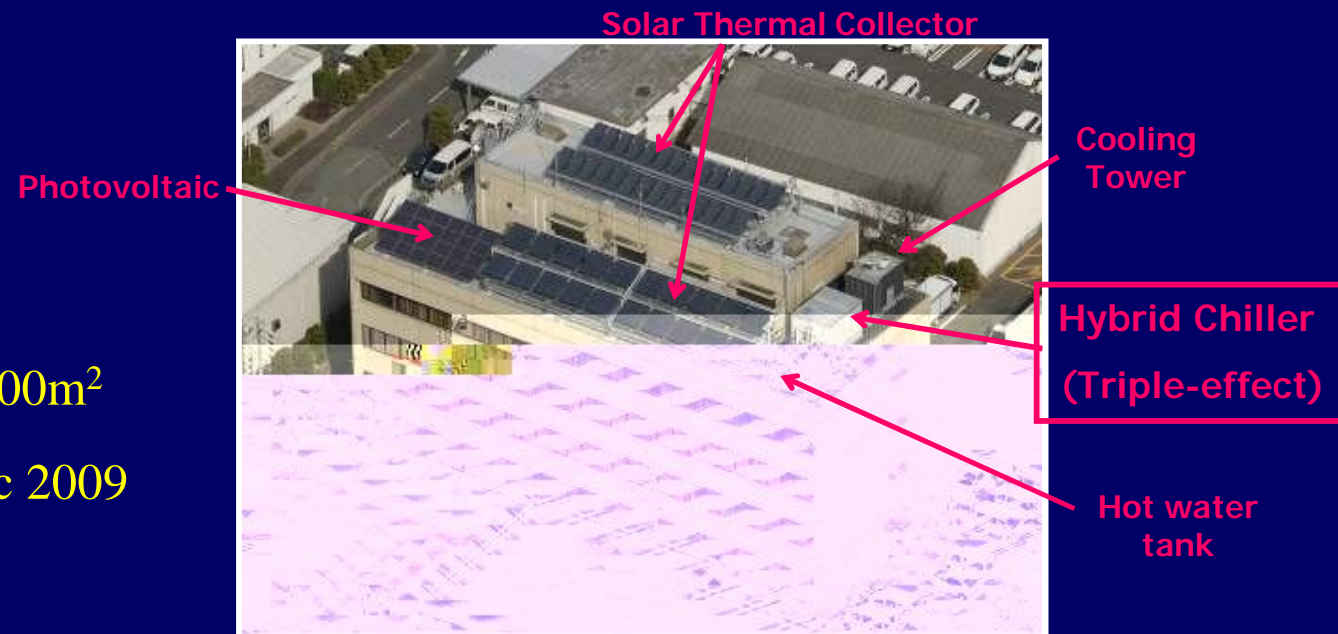
Installation of Hybrid Chiller



Natural Gas + Solar Thermal Triple-effect Hybrid Chiller system

equipment	Specifications
Chiller (Triple-effect)	Cooling capacity : 527kW Heat source: Natural gas + Hot Water (Solar Thermal)
Solar Thermal Collector Panel	139m ² (Vacuum pipe type : 83m ² / Flat plate type : 56m ²)
other	Photovoltaic 4kW (32m ²)

Number of floor : 4
Floor space : 2,400m²
Installation : Dec 2009



Conclusion(1)



Kawasaki aims to become a leading global enterprise

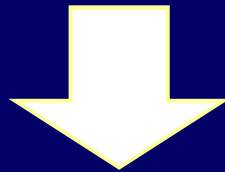
that enriches lifestyles and

helps safeguard the environment through its businesses.

Conclusion(2)

Kawasaki absorption chiller is . . .

- **Freon-Free**
- **Less power consumption**
- **Various Energy Sources**



Environment friendly

Low carbon emission



**Thank you very much
for your attention**

Kawasaki Thermal Engineering Co., Ltd.

<http://www.khi.co.jp/corp/kte>

